

ILIAC EXTENSION PRODUCT SPECIFICATION

Code	Proximal Diameter(mm)	Distal Diameter(mm)	Total covered Length(mm)	Delivery system (Fr.)
Cuff1212C040	12	12	40	18
Cuff1212C060	12	12	60	18
Cuff1212C080	12	12	80	18
Cuff1212C100	12	12	100	18
Cuff1212C120	12	12	120	18
Cuff1410C040	14	10	40	18
Cuff1410C060	14	10	60	18
Cuff1410C080	14	10	80	18
Cuff1410C100	14	10	100	18
Cuff1410C120	14	10	120	18
Cuff1412C040	14	12	40	18
Cuff1412C060	14	12	60	18
Cuff1412C080	14	12	80	18
Cuff1412C100	14	12	100	18
Cuff1412C120	14	12	120	18
Cuff1414C040	14	14	40	18
Cuff1414C060	14	14	60	18
Cuff1414C080	14	14	80	18
Cuff1414C100	14	14	100	18
Cuff1414C120	14	14	120	18
Cuff1416C040	14	16	40	18
Cuff1416C060	14	16	60	18
Cuff1416C080	14	16	80	18
Cuff1416C100	14	16	100	18
Cuff1416C120	14	16	120	18
Cuff1418C040	14	18	40	18
Cuff1418C060	14	18	60	18
Cuff1418C080	14	18	80	18
Cuff1418C100	14	18	100	18
Cuff1418C120	14	18	120	18
Cuff1420C040	14	20	40	18
Cuff1420C060	14	20	60	18
Cuff1420C080	14	20	80	18
Cuff1420C100	14	20	100	18
Cuff1420C120	14	20	120	18

ILIAC EXTENSION PRODUCT SPECIFICATION

Code	Proximal Diameter(mm)	Distal Diameter(mm)	Total covered Length(mm)	Delivery system (Fr.)
Cuff1422C040	14	22	40	18
Cuff1422C060	14	22	60	18
Cuff1422C080	14	22	80	18
Cuff1422C100	14	22	100	18
Cuff1422C120	14	22	120	18
Cuff1616C040	16	16	40	18
Cuff1616C060	16	16	60	18
Cuff1616C080	16	16	80	18
Cuff1616C100	16	16	100	18
Cuff1616C120	16	16	120	18
Cuff1618C040	16	18	40	18
Cuff1618C060	16	18	60	18
Cuff1618C080	16	18	80	18
Cuff1618C100	16	18	100	18
Cuff1618C120	16	18	120	18
Cuff1620C040	16	20	40	18
Cuff1620C060	16	20	60	18
Cuff1620C080	16	20	80	18
Cuff1620C100	16	20	100	18
Cuff1620C120	16	20	120	18
Cuff1622C040	16	22	40	18
Cuff1622C060	16	22	60	18
Cuff1622C080	16	22	80	18
Cuff1622C100	16	22	100	18
Cuff1622C120	16	22	120	18

Lower Profile

Ankura™
AAA Stent Graft System

LOWER PROFILE
MORE FLEXIBLE
PRECISER IMPLANTATION



Lifetech Scientific (Shenzhen) co.,Ltd

ADD:Floor 1-5, Cybio Electronic Building, Langshan 2nd Street, North Area of High-tech Park, Nanshan District, Shenzhen 518057, P. R. China
Tel:+86-755-86026250 Fax:86-755-86026251
Email:marketing@lifetechmed.com
Web:www.lifetechmed.com

EU authorized representative:
LifeTech Scientific (Europe) Coöperatief U.A.
Oliemolenstraat 60, 6416CB Heerlen, the Netherlands

2020-EN-1.0

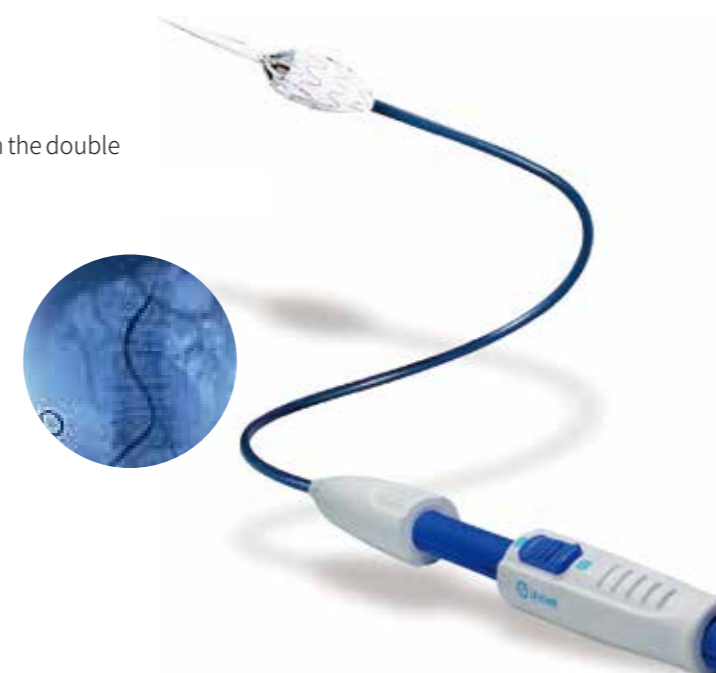
LONG TERM PRACTICE RICH CLINICAL EXPERIENCES

STABLE SUPPORT, LOWER RISK

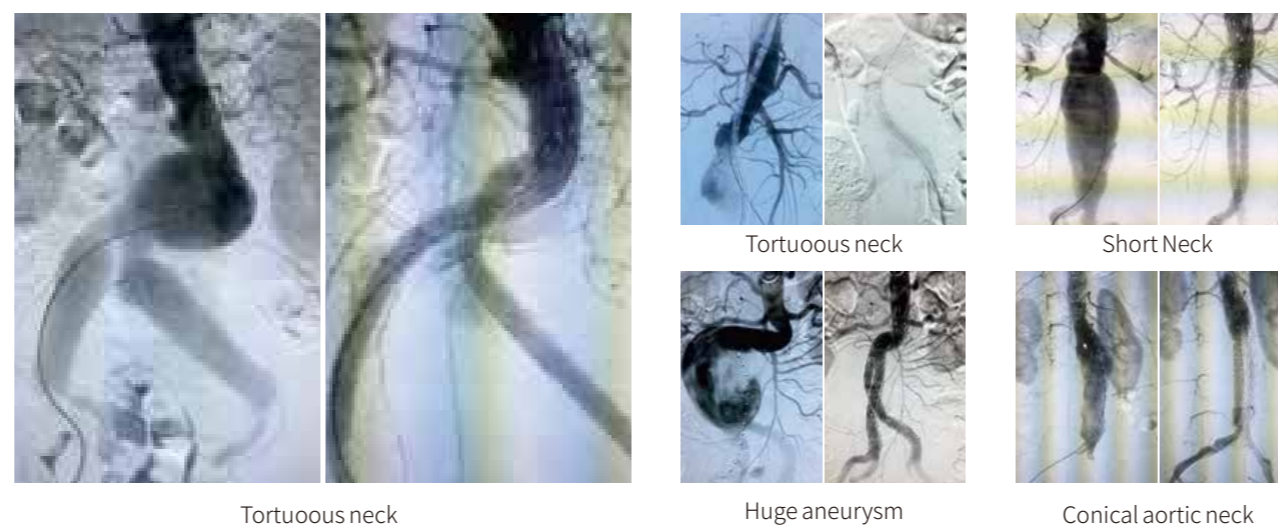
- 6 barbs of the bare stent ensure that the stent is fixed on vessel wall
- E-PTFE dual membrane reduces endoleak, and the ribbon between the double membranes prevents stent radial expansion
- Self-expanding Nitinol stent offers stable radial force
- Increase the wave spacing on the main body improve the flexibility

DIVERSIFIED CLINICAL SOLUTIONS

- 3 pieces components meet various clinical needs
- 8 radiopaque markers facilitate accurate positioning
- Reduced sheath profile provides easier access



Ankura™ AAA STENT GRAFT CASES



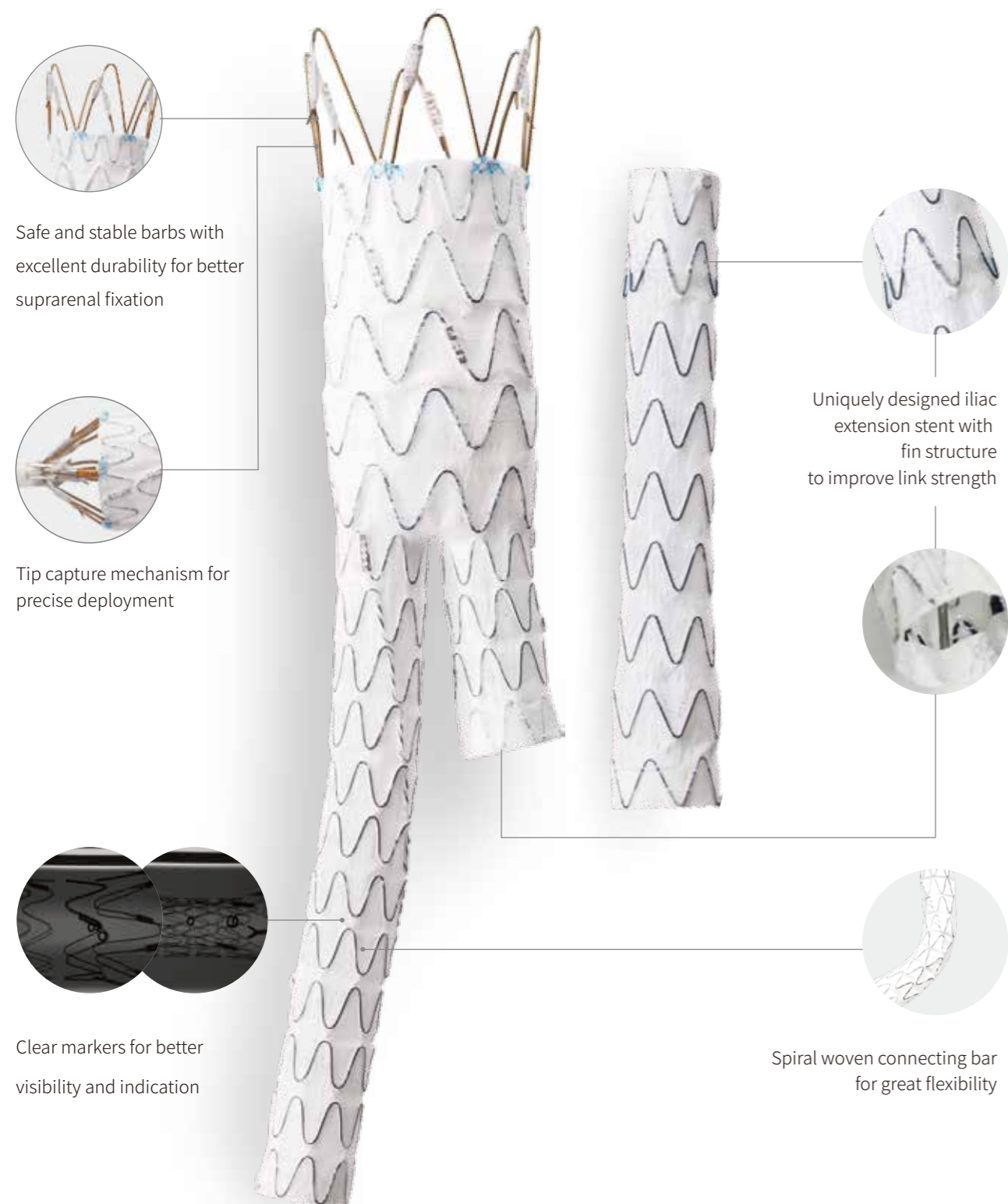
Tortuous neck

Huge aneurysm

Conical aortic neck

Tortuous neck

Short Neck



Safe and stable barbs with excellent durability for better suprarenal fixation

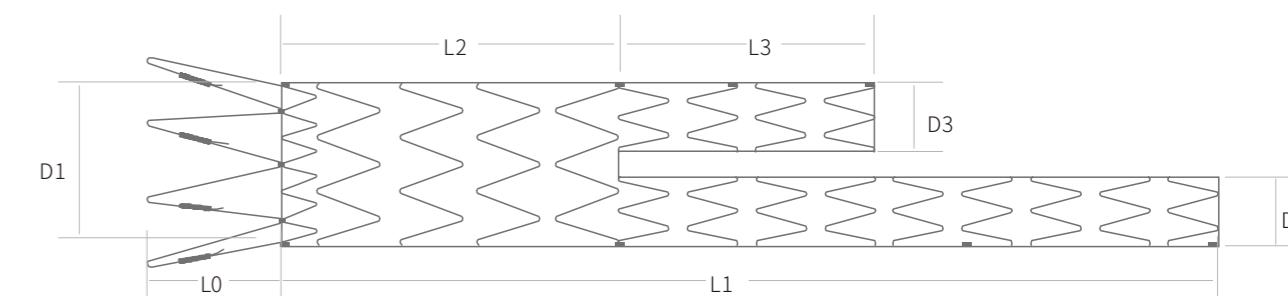
Tip capture mechanism for precise deployment

Clear markers for better visibility and indication

Spiral woven connecting bar for great flexibility

Uniquely designed iliac extension stent with fin structure to improve link strength

PRODUCT SPECIFICATION



D1	D2/D3	L1	L2	L3
Proximal diameter	Ipsilateral/Contralateral limb diameter	Main body covered length (Ipsilateral limb length included)	Main body covered length	Contralateral limb length

MAIN BODY SPECIFICATION

Code	D1(mm)	D2/D3(mm)	L1(mm)	L2(mm)	L3(mm)	Delivery system (Fr.)
AAA2010B120	20	10	120	50	30	20
AAA2210B120	22	10	120	50	30	20
AAA2412B120	24	12	120	50	30	20
AAA2612B120	26	12	120	50	30	20
AAA2812B120	28	12	120	50	30	20
AAA3012B120	30	12	120	50	30	22
AAA3212B120	32	12	120	50	30	22
AAA3412B120	34	12	120	50	30	22
AAA3612B120	36	12	120	50	30	22

Code	D1(mm)	D2/D3(mm)	L1(mm)	L2(mm)	L3(mm)	Delivery system (Fr.)
AAA2010B140	20	10	140	50	30	20
AAA2210B140	22	10	140	50	30	20
AAA2412B140	24	12	140	50	30	20
AAA2612B140	26	12	140	50	30	20
AAA2812B140	28	12	140	50	30	20
AAA3012B140	30	12	140	50	30	22
AAA3212B140	32	12	140	50	30	22
AAA3412B140	34	12	140	50	30	22
AAA3612B140	36	12	140	50	30	22